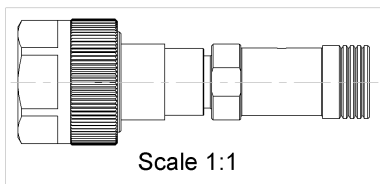
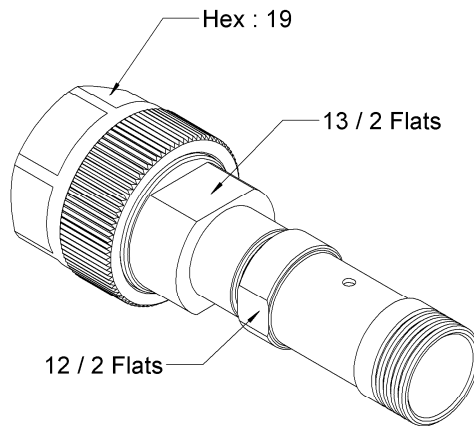
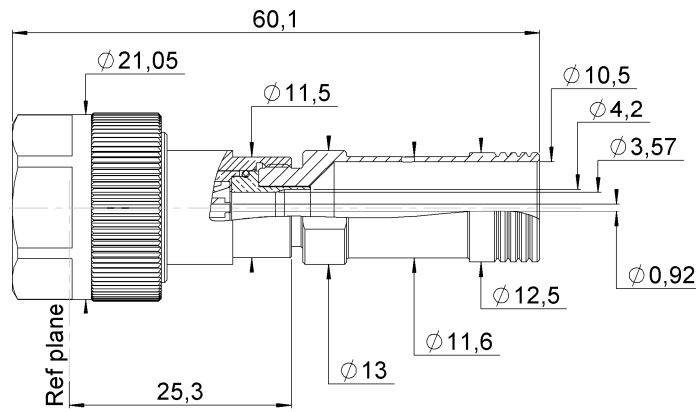


STRAIGHT PLUG SOLDER TYPE

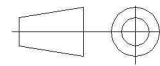
CABLE SHF3M-TM

R163.063.101

Series : N-18



All dimensions are in mm.



COMPONENTS	MATERIALS	PLATING (µm)
BODY	STAINLESS STEEL	PASSIVATED
CENTER CONTACT	BRASS	GOLD 1.3 OVER NICKEL2
OUTER CONTACT	-	-
INSULATOR	PEEK	
GASKET	FLUORO SILICON RUBBER	
OTHERS PARTS	BRASS	GOLD 0.2 OVER NICKEL 2
-	-	-
-	-	-

Issue : 1435 D

In the effort to improve our products, we reserve the right to make changes judged to be necessary.



DRAFT

STRAIGHT PLUG SOLDER TYPE

R163.063.101

CABLE SHF3M-TM

Series : N-18

PACKAGING

Standard	Unit	Other
50		Contact us

SPECIFICATION

ELECTRICAL CHARACTERISTICS

Impedance		50 Ω
Frequency		0-18 GHz
VSWR	1.05 + 0,0050	x F(GHz) Maxi
Insertion loss		0.1 √F(GHz) dB Maxi
RF leakage	- (90 - F(GHz)) dB Maxi
Voltage rating		350 Veff Maxi
Dielectric withstanding voltage		750 Veff mini
Insulation resistance		5000 MΩ mini

CABLE ASSEMBLY

Stripping	a	b	c	d	e	f
mm	6,30	0,00	0,00	0,00	0,00	0,00

Assembly instruction : **NA**

Recommended cable(s)
SHF3M TM

Characteristics indicated on this data sheet are those that can be achieved with the highest performance cable. Intrinsic limitations of the cable may diminish the performance of the assembly

Cable retention

- pull off **** N mini**
- torque **** N.cm**

MECHANICAL CHARACTERISTICS

Center contact retention		
Axial force – Mating end	50	N mini
Axial force – Opposite end	50	N mini
Torque	NA	N.cm mini

TOOLING

Part Number	Description	Hexagon
.	.	.

Recommended torque		
Mating	400	N.cm
Panel nut	NA	N.cm
Clamp nut	170	N.cm
A/F clamp nut	12,0000	mm

OTHER CHARACTERISTICS

**See TDS of the cable assembly

ENVIRONMENTAL

Operating temperature	-55/+125	°C
Hermetic seal	IP67	Atm.cm3/s
Panel leakage	NA	

Issue : 1435 D

In the effort to improve our products, we reserve the right to make changes judged to be necessary.



DRAFT